



August 2023

Calendar of Meets

August 3-15 - Ventura Fair

September 16 - Siegel

October 28 - Arsenault

November 18 - Siegel

December - Newlon

It's Fair Time!

The Ventura County Fair is underway and so far the reviews have been great! The GCGRS exhibit has won a first place award, a second place award and the judges have awarded it the "Best of Show" award.

There have been a few challenges that I am aware of such as mismatched couplers, overheating power packs and a partial cave-in of a tunnel but the build crew is on top of the problems and they are solving the glitches as fast as they show up.

The fair attendees seem to love the exhibit and many have been made aware of the garden railroading hobby. Lots of folks were not even aware that you could build a railroad in your backyard.

Congratulations and thanks to the hard work and efforts of the build crew that made this happen.

The crew:

Randy Bryie

Mary Heumphreus

Larry and Bonnie Lowenberg

Byron McCracken and grandson Chris

Gary Olmstead

Lamont Stolley

There are still a number of slots available if you would like to help man the exhibit. Besides being a lot of fun your participation will help the build crew and will give them a little rest.

It will also get you into the fair for free.

Contact John Whitaker to pick a time to work at the fair.
(661)903-0990

John Lyans

Newsletter: John Lyans
lyans@pacbell.net

Accounts/Badges:
Bruce Kuebler
pbkuebler@sbcglobal.net

Web Page: Gary Olmstead
<https://www.gcgrs.com/>

Meet Scheduling/Facebook: John & Kim
Whitaker
<https://www.facebook.com/groups/145996342219253/>



Helpful Hints for working at the GCGRS exhibit.

So far, we have won a first prize, a second prize and Best of Show. More prizes will be awarded, so stay tuned. Sorry, I didn't take any pictures. I should have more time today. If you are signed up for a shift at the fair (and if you aren't, there are still prime slots available), here are a few things to be aware of

I have printed tickets here for everyone who needs one. Tuesday is Senior Day, so if you are over 65 you get in free anyway. As far as I know, everyone signed up for that day qualifies. Next Thursday is Dollar Day, everyone gets in for one dollar. I wasn't planning to issue tickets for either day.

We are two blocks from a free shuttle stop, so you can pick up your tickets on your way to the shuttle bus. In theory, I can text the tickets to your smart phone, but it took three tries to send one to Larry, and we still don't know if it really worked. I don't have any way to email a ticket.

You don't have to stand in line to get in. Go to the far left side, to the Vendor's entrance. They will either scan or take your ticket, but in either case they are single use tickets.

Our space is HOT all day. Not only in full sun, but also gets the reflected heat off both walls. Every plant needs to be watered every day. The ground cover will need water twice a day, and probably still won't make it. I suggest long sleeves and a broad brimmed hat, or plenty of sun screen. We had an umbrella, but the wind was so strong we couldn't use it. Last year, we had more shelter, so it wasn't quite as bad.

As you stand facing our display, the hose is to your right, on the far side of the County Ag Department display. They have a bunch of loose rocks in front of their display. Please keep the hose away from them. The "easy" way to water the plants in the back of our display is with a watering can. There are two in the black box.

If the waterfall is filled in the morning, it will run all day unattended. We lose water when it splashes out, so the lower it gets, the less water we lose. There is an optimum fill level, but I haven't found it.

There are steps on the left side of our display, and also in the back on either side of the waterfall. There is no good way to access the back of the waterfall, so if a train gets stuck there, and you have balance concerns, just abandon the outside track for the rest of your shift.

If you need to access the far right side, please be aware that our neighbors planted some very small plants right next to our space. I was being careful, and still stepped on two of them.

Our space is COLD at night. A breeze kicks up off the ocean, and it gets remarkably cold at night.

Not only is the beer garden back, there is also wine for sale, and a stage with musicians, and a display of hot tubs. There are also two places for visitors to sit in the shade and drink their beer or wine and listen to music. The upshot is that there are a lot more people in Floriculture.

When the show started at the Arena, Floriculture emptied out completely. We closed early and went home.

Due to various power supply issues, we ended up running Santa Claus vs Eggliner races. These were very popular with the younger kids.

Several people asked detailed questions about the plants. Every display featured drought tolerant plantings, but all but a half dozen featured cactus and succulents. So, there was plenty of interest in our plants.

All for now!! Replies invited!!

Gary





Ventura County Fair 2023
Gold Coast Garden Railway Society Layout Display
Volunteer Sign up
August 2 - 13, 2023

	Shift 1 Opening to 6:00 pm		Shift 2 5:00pm to 9:00pm	
	Person 1	Person 2	Person 1	Person 2
Wed 8-2-23 Opens 1:00	Larry Lowenberg 818-388-4536	Bonnie Lowenberg	Byron McCracken 805-290-2413	Grandson Chris
Th 8-3-23 Opens 1:00	Gary Olmstead 805-754-9222	Bob Cantore 213-999-2195	Lamont Stolley 805-341-8019	Barbara Stolley
Fri 8-4-23 Opens 1:00	John Whitaker 661-903-0990	Mark DeVall 818-635-2175	Randy Bryie 805-490-3237	Bob Frein 818-400-8086
Sat 8-5-23 Opens 12:00	John, Kim Whitaker 661-903-0990	Pep, Shalise Munoz 661-717-4172	John Whitaker 661-903-0990	Kim Whitaker
Sun 8-6-23 Opens 12:00	John Whitaker 661-903-0990	Kim Whitaker	Randy Bryie 805-490-3237	Nancy Bryie
Mon 8-7-23 Opens 1:00	Charlie Richard 805-207-6311	Nansi Richard	Byron McCracken 805-290-2413	Grandson Chris
Tue 8-8-23 Opens 11:00	Don Maddy 805-234-4188	Charlie & Nansi Richard	John Lyans 805-659-0170	Amie Lyans
Wed 8-9-23 Opens 1:00			Lamont Stolley 805-341-8014	Barbara Stolley
Th 8-10-23 Opens 1:00	Jim, Sylvia Eldridge 818-823-8056	Mary Heumphreus 805-453-2629	Byron McCracken 805-290-2413	Grandson Chris
Fri 8-11-23 Opens 1:00	Tim Singletary 818-292-7785		Tim Singletary 818-292-7785	
Sat 8-12-23 Opens 12:00				
Sun 8-13-23 Opens 12:00	Larry Lowenberg 818-388-4536	Bonnie Lowenberg	Randy Bryie 805-490-3237	Nancy Bryie

Mon 8-14-2023 Breakdown: ??

On-Call as needed:

To sign-up for SCHEDULING, please contact John Whitaker ASAP: whitdevelop@sbcglobal.net 661-903-0990

Some of you may have met Mike Brown at the meet in June at the Bussings. Mike sent me some pictures of some models that he purchased that were built by the late, great, Jim Ferry, ex GCGRS member and character extraordinaire. Jim was a great model builder, first in 1:22.5, and later in 1:20.3. He was also the creator of the Bear Whiz line of cars. He left the GCGRS when he moved from Burbank to Pagosa Springs, Colorado. Jim passed away on November 4, 2006. RIP Jim. Nice to see that his models are still being appreciated.

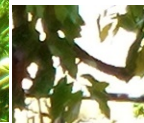




Siegel Meet on Saturday, July 12

There were about ten people at the Siegel's on 7/12. The reports are that it was a nice day and that the track was in good shape thanks to the efforts of John Ryan, Bruce Morden and Nick Conti. Thanks also to Bill Fincher, Bruce Morden, and Bob Kahn for sending photos for the newsletter. Thank you Marilyn and Gary for letting us use your home and railroad on a regular basis.















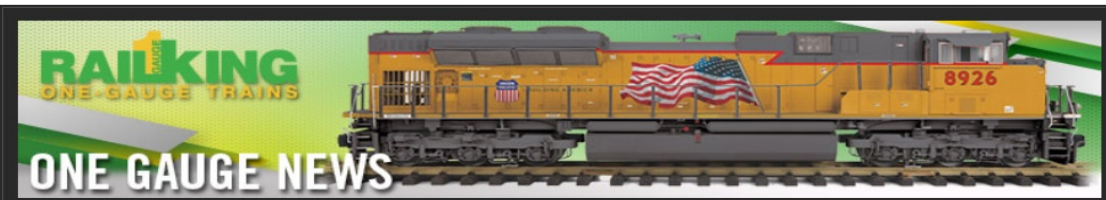






It doesn't get any better than this! Gary and Bruce relaxing in a beautiful setting while the trains run through the forests, mountains, tunnels and trees.

Gary Raymond sent this. Despite rumors to the contrary, MTH is still in business and is producing 1:32 scale engines. It's nice to see the F3's available again.



[MTH Home](#) [My MTH](#) [Product Locator](#) [MTH News](#) [MTH Service](#) [Contact Us](#)

RAILKING ONE-GAUGE TRAINS 2023 G Scale F-3 Diesels Announced



July 19, 2023 - M.T.H. Electric Trains will be releasing the 2023 RailKing One Gauge G Scale F-3 Diesel Locomotive in five different livery schemes this Winter. Each of these offerings will be available in AA, Single A, and Non-Powered B Unit configurations. All are limited in production and expected to begin shipping to M.T.H. Authorized Retailers in December 2023.

Check out each of these offerings [HERE](#).

These items are available to order from your local [M.T.H. Authorized Retailer](#).

ABOUT THE RAILKING ONE GAUGE G SCALE F-3 DIESEL LOCOMOTIVE

From 1942-1945, Electro-Motive Division's F-unit was the only road freight diesel built in America. While the War Production Board limited competitors Alco and Baldwin to diesel switcher and steam locomotive production during World War II, EMD's 1,350 hp FT became a runaway best-seller. By the war's end, Electro Motive had a lead over its competitors that would last until it closed its doors.

With production restrictions lifted and the U.S. economy humming with pent-up demand, railroads clamored for new diesels to replace a steam fleet exhausted by wartime traffic. In July 1946, EMD introduced a new model F-unit, the F3. Horsepower was upgraded to 1,500 and lessons learned on the FT gave the F3 better reliability and lower maintenance. Under the hood throbbed an improved 567-series V-12 engine. With 567 inches of displacement per cylinder, this same engine would power virtually the entire first generation of EMD diesel locomotives.

The F3 hit the market in an era when almost every boy in America wanted toy trains for Christmas, and F3 models quickly became a hot topic in letters to Santa. Such was the desire of railroads for publicity that Lionel® convinced the Santa Fe, the New York Central, and EMD to share the tooling costs for its top-of-the-line F3. Even today, half a century later, the Santa Fe F-unit remains an icon of railroading to the American public.

Check out each of these offerings [HERE](#).



John Ryan's 7 1/2" Gauge EMD Build, Part 9

Building a 7 1/2 inch Gauge Locomotive Part 9 Roof Construction

By John Ryan

To refresh your memory from Part 8, we finished up the cab's Brow.

First we created a semicircular bottom for the Brow. We then attached the middle frontal piece that holds the upper set of lights. We also had to create a more appropriate light bezel.

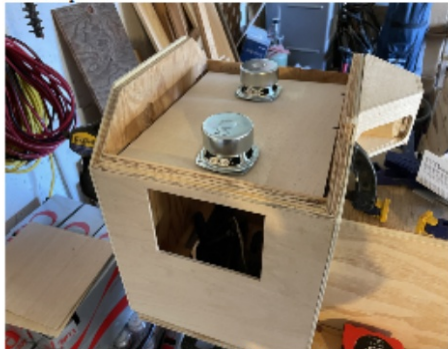
For this section we'll give it a roof.

The easy thing would be to simply cut roof panels to size and nail them to the top. However, I wanted to have the roof be a small storage area, so, it had to be removable.

Since I wanted it to be a storage space, I also needed to make a ceiling. Of course the ceiling on a real locomotive is the underside of the roof.

I also needed a place to install speakers for a future sound system. The ceiling was the perfect location.

To plan for the speakers, I used a not quite properly sized piece of scrap. Notice the clamps I used to temporarily hold the board in place.



To support the ceiling, I attached these wood blocks.



Properly sized ceiling attached to the supports. You can see the supports through the windows. If I feel the need, I may make them less noticeable.



Here are the pieces to the framework for the roof. I custom cut the four strips from a scrap piece of pine. The notch in the front piece of plywood is to allow clearance for the bolts that attach the brow and for the wires from the lights. Pretty simple design.



Now that the framework is together, let's see how it fits.



Plenty of room for the speakers. Once I figured out where I wanted the speakers to sit, I marked their position.



Now let's put a roof on our lid framework. Here are the 3 pieces waiting to be attached.





Looks pretty good!
I must admit, being a removable roof, this created seams that wouldn't normally be there. It also exposed some imprecise cuts. Sometimes, you just have to settle. To me, it's acceptable.



Now let's get back to the speakers.
I had bought 4 of these speakers a few years ago for G gauge loco installs. Unfortunately, they were too tall to fit in the usual location in a fuel tank. Rather than send them back, I decided to hold onto them in hopes that I could find a future use for them. I was right, I found a new use. These speakers have a large magnet so they should put out some good bass.



The speakers have an extended lip around the cone so when I cut the holes in the board, the speakers settle nicely into the holes. This gives them more stability beyond just screwing them down.



Holes cut, ceiling reinstalled and there's still a little room to store necessary items.
One idea is to store the throttle in the remaining space.



I'm sure our resident "Sound Engineer" Mr. Raymond would disagree but, for now, I'm not going to make an enclosure for the speakers. We'll see how it sounds without a sound chamber. I feel I can always make one later if I feel it's necessary.



More and more it's looking like an EMD.
Next, it's time for our loco to get a nose job.
Stay tuned for Part 9.