



October 2023

Calendar of Meets

Oct. 7 – Sal & Deborah Mele

Oct. 28 – Georges & Marie Arseneault

November 18 – Siegel

December – Newlon

In this issue

Upcoming meets

Past meets.

The Goleta depot

Piko tank engine

Building a 7 ½" gauge locomotive part 11

Movie Set train for sale

Modeling Ideas

October Meets

Sal & Deborah Mele will host on Saturday October 7 at 11:00 am. The Mele's will provide hot dogs and drinks. Please bring a side dish or dessert to share. After lunch there will be an after-action report and awards presentation from the results of the Ventura County Fair exhibit. If you have input or want to be involved in planning next year's fair exhibit, this is your chance.

Sal has a fun railroad with lots of animation. The ore car tramway is fun to watch and always working, the funicular? Well, we'll see! And according to John Whitaker, Sal has something new this year! The railroad is code 332, track power, with R3 curves.

Georges & Marie Arseneault will have a meet on Saturday, October 28 at 11:00 am. Georges has been super busy fighting weeds and ants and Marie is still struggling with her hearing. But they are troopers! Georges and Marie will provide hot dogs, chicken wings and drinks; feel free to bring some chips, salads or deserts to share. Georges and Marie usually have a Halloween theme with games and treats to entertain you if you get tired of running super long trains on George's huge, battery powered layout. Georges also has a ride-on railroad that circles the large backyard and runs out to the street in the front yard. Last year he had added several full size mine cars that run on a section of full size tracks.

Last year Gary Raymond brought his adorable, mechanical daughter Isabella to the meet. Isabella was looking for someone to be her friend. My granddaughter is still having nightmares!.

There's is lots to do and see here. Great fun!

Newsletter: John Lyans
lyans@pacbell.net

Accounts/Badges:
Bruce Kuebler
pbkuebler@sbcglobal.net

Web Page: Gary Olmstead
<https://www.gcgrs.com/>

Meet Scheduling/Facebook: John & Kim
Whitaker
<https://www.facebook.com/groups/145996342219253/>

Gary and Marilyn Siegel Meet

Gary's track crew had the mainline operable and there was a good crowd on hand including visitors to enjoy the beautiful weather and the spectacular railroad. Thank you to the Nick and John and their track crew for keeping this masterpiece going. Thank you to Bill Fincher and Bruce Morden for the following photographs.







Tim even had some live steam operating

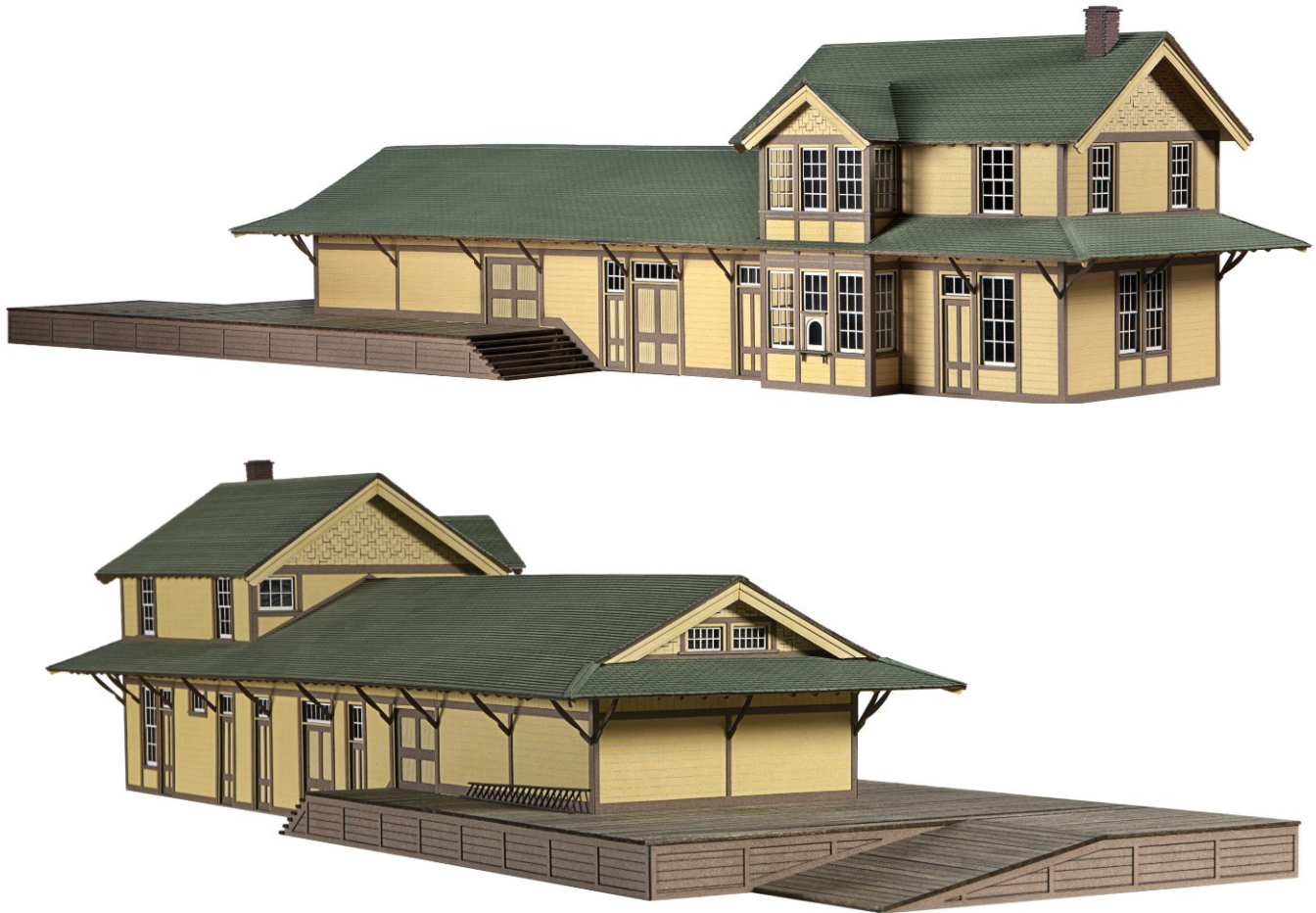




Goleta Depot

Russ Reinberg

OK folks, this is pretty cool! Even though it is not built in one of the scales that we typically use in the garden, it is nonetheless as big or bigger than some of the buildings that we do use outdoors. Russ was kind enough to share these pictures of his model of the Goleta train depot that is done in HO scale. Enjoy, this is a true work of art! *John Lyans*



On Thursday I finally finished work on an HO scale model of the Southern Pacific depot at Goleta, CA. It is 100% scratch built from wood and card stock; not a single commercial part on the whole model. I originally shot photos of the depot (prior to digital) in 1991, began drawing plans from those photos last December, began construction in mid February, and did about four or five test cuts on the laser, followed by test assemblies, to fix what didn't fit. I finally raised the walls in mid March. Everything was ready until a piece of charcoal dropped from a roof panel onto the rear wall and ruined the entire model! I had to rebuild it ... and then the laser broke. I spent two months dealing with that problem and finally, with help from the Australian manufacturer, rebuilt the defective component, and went back to work. It truly has been a project from hell.

Why HO? The thing is 20 inches long. Imagine how big it would be in 1:48. We just don't have that kind of display or storage space in our house. Russ



GRITFY's PIKO TANK LOCOMOTIVE



FROM THE
SHOP OF
WALT
THOMPSON

For some reason i really liked the looks of the tank locomotive and it was one configuration the GRITFY didn't have on its roster. Right after PIKO released their tank locomotive I read about it and figured I should have one. Their 0-6-0 has a good strong motor and for the most part it pulls well but for some reason it lacked the ability to pick up track power while making its way through some of the GRITFY's turnout so I figured something had to be done. To augment this i added a rear truck assembly with track pickups made up from part of a Bachmann Big Hauler pilot truck. This did improve matters and connecting the wires was pretty simple just having to maintain polarity. I also added some needed weight inside the locomotive for traction and as a personal touch I applied the GRITFY's logo.



Here is our tank locomotive running through our Bakersfield rose garden heading a train consisting of a few Delton Locomotive Works log cars. These cars originally came as cut lumber cars with a funky looking load of plastic simulated cut lumber. I replaced the simulated cut lumber with some branches cut from a Fichus tree. The logs are tied down to the cars with chains and chain cinches from Ozark Miniatures. These cars came with metal wheels but the couplers have been changed over to KaDee #820 couplers.

Building a 7 1/2 inch Gauge Locomotive

Part 11

Nose Job

(2)

Installing the nose lights

By John Ryan

So, this is where we left off from Part 10.

We assembled a basic box, what I call a cassette, for the headlight bezel mount. The cassette allows me to easily move the assembly into the proper position once the nose has been cut into. It also will serve as a base for the emergency light.



We attached the vertical supports to the backside of the upper portion of the nose. Then, we trimmed and attached the base piece to the supports and the nose. As mentioned in part 10, the base also puts strength back into the nose.



Now comes the scary part!
Time to start cutting.



The first cut is always the hardest.

I made a small cut just to get things started. Cut by cut, I worked my way out to the inner supports and down to the base. As you can see, I still have my thumb.



Eventually I got to this rough opening.



Using my Dremel with a sanding drum, a sonic cutting tool with a sanding attachment and an old fashioned file, I was able to open the hole to allow for insertion of the headlight cassette.



Even though I cut the hole in the nose, I still wasn't done with the cutting. Because the emergency light extends a little above the top of the nose, I had to make a cut to the top portion of the nose to accommodate the light housing. After finding approximate center, I made a notch just wide enough to hold the light in place. I kept cutting back till the light was set back in the nose where it needed to be.



Obviously, the emergency light housing does not have the same width as the headlight housing. The next round of cutting and shaping required angling the cut inward, a wedge shape.



A lot of sanding, filing and trimming went into getting the angles the way I wanted them. Eventually, I got it looking the way I wanted it. What do you think? Good enough for Govt. work?



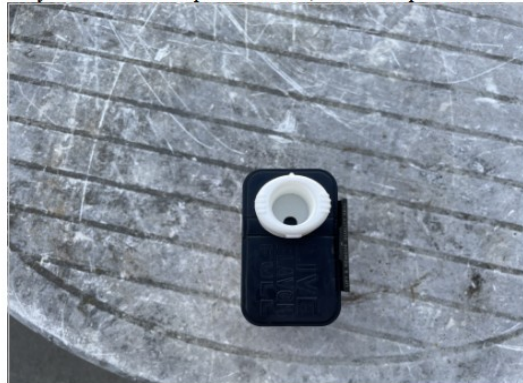
Finally, I had to close off the back of the opening. This is where the emergency light is secured to the assembly. As you can see, I've already made the holes for the screws. Also, there's a hole for the light wires to pass through.



Remember in Part 10 I mentioned a bracket that wrapped around the back of the emergency light? Well, I wasn't sure how I wanted to recreate that look. On the prototype, the thin metal for the bracket is probably around an $1/8^{\text{th}}$ to $1/4$ in. I certainly couldn't do it with wood. Plastic was a possibility but metal was the best option. It took me a little while but I finally remembered I had saved an item for just such a need. Just prior to this portion of the build I emptied a spice can. I decided to save it thinking I might be able to use it for something, just didn't know what.



It dawned on me that it might actually be just the perfect fit for the E-light. All I had to do is cut the can. Another benefit, the corners were already basically formed. As you can see in the picture below, it's a near perfect fit.



I'm going to keep you in suspense by stopping here. Stay tuned for Part 12. The bracket takes shape.

For Sale – Large Engine, Two Passenger Cars

We are preparing to do a big space-related movie once the film industry strikes are settled. That will require building some full-sized spacecraft like our Space Shuttle and a couple of new Mars Rovers in full-scale. So I need to make room in my shop and these large train models need to go.

According to Colin Westphal, these models are 1:12 scale. The passenger cars are made of extruded aluminum by a company in Canada. Both the engine and passenger cars are extremely sturdy and hold up well to explosions, flames, derailments, etc. That's not a problem for this train; it is still in great shape as it was made to withstand that kind of punishment for special effects. These pieces are very well detailed by professionals and on camera they look like the real thing and they have been in a number of movies. The quality of the paint and detailing is exceptional. As you can see that we weather them in such a way that they look realistic on camera.

The locomotive is radio controlled and runs off of two series of die hard batteries and can really pull a heavy load at high speed if needed. As I recall we used a conveyor belt motor to power it. The remote control is very much like what you would use on a RC race car or airplane. The front end is partly made of heavy fiberglass and steel for crashing into objects and through walls. It does not have sound but that can be easily added.

The two passenger cars are detailed but do not have interiors. They're made of extruded aluminum and can even carry the weight of people sitting on them! Almost literally bullet resistant if not bulletproof. I need to check in the warehouse but there might be a flat car and a gondola available as well.

These large models are too large for me to store and they are getting in the way of these newer projects. We only get a few calls each year now that CGI has come into being. Selling this set quickly is of the essence because we do need the room once the strike ends and that is apparently within the month. We can help you set it up and there's a huge club in Griffith Park where you can run the train if you don't want to do it on your own property. By the way, there is approximately 50 feet or more of tracks that goes with the train as well as other items. I have several good & interesting shots of it in action including one where it crashes through one of the walls at Grand Central Station in Los Angeles. We did that one live with other people in the building and it was a blast quite literally :-)

We could still make these available for rent at our web site if you purchase them and are amenable to share the rental fee. I am serious about that and would welcome it. I would prefer for these models to stay in the area, but It's been a lot of fun doing FX with it over the years!

Does anyone know who made these?

Make an offer please if you are interested

Brick Price, President, Wonder Works, Inc.
818.448.8816
818.992.8811 24/7
Please leave a message.
bpriceww@gmail.com
www.wonderworksworld.com
7231 Remmet Ave.
Canoga Park, California
91303 USA





erWorks™ inc.



WonderWorks™ inc.



WonderWorks™ inc.

Modeling Ideas

I found this old 1908 poster in a box that my grandfather had saved. R.G. Lyans, *President of the Day*, is my great grandfather. Center Junction, Iowa was so named because the Chicago & Northwestern Railway and the Chicago, Minneapolis, St. Paul Railway crossed in town. Both railroads are long gone now and the town has dis-incorporated and dwindled to a population of about 100 people. The poster would look great on the side of one of my large scale buildings.

4TH OF JULY CELEBRATION

CENTER JUNCTION

Will Celebrate, with Dignity and Enthusiasm (especially enthusiasm) the 131st Birthday of this Great Nation. Citizens of Neighboring Towns are Invited to Join us in Making this the Most Memorable Occasion in Our History

SALUTE OF 100 GUNS AT SUNRISE
THE UNOFFICIAL RACKET MAY BEGIN EARLIER

A GRAND PARADE
of Civic and Military Societies, School Children, Citizens and Visitors will form at 10 A. M., under leadership of J. McDonald, Marshal of the Day, and March Through the Streets to the Grounds, where a Fine Program will be Presented.

REV. D. C. DUTTON OF ANAMOSA
ORATOR OF THE DAY, WILL QUICKEN THE PATRIOTIC PULSE

MUSIC ALL DAY BY THE OLIN SILVER CORNET BAND

GREAT PROGRAM OF SPORTS
Base Ball Game between the Cedar Rapids Eagles and Monticello, Foot Races, Tug-of-War, Chasing the Lubricated Pig, Etc.

THE BIG DAY WILL COME TO A GLORIOUS END WITH A

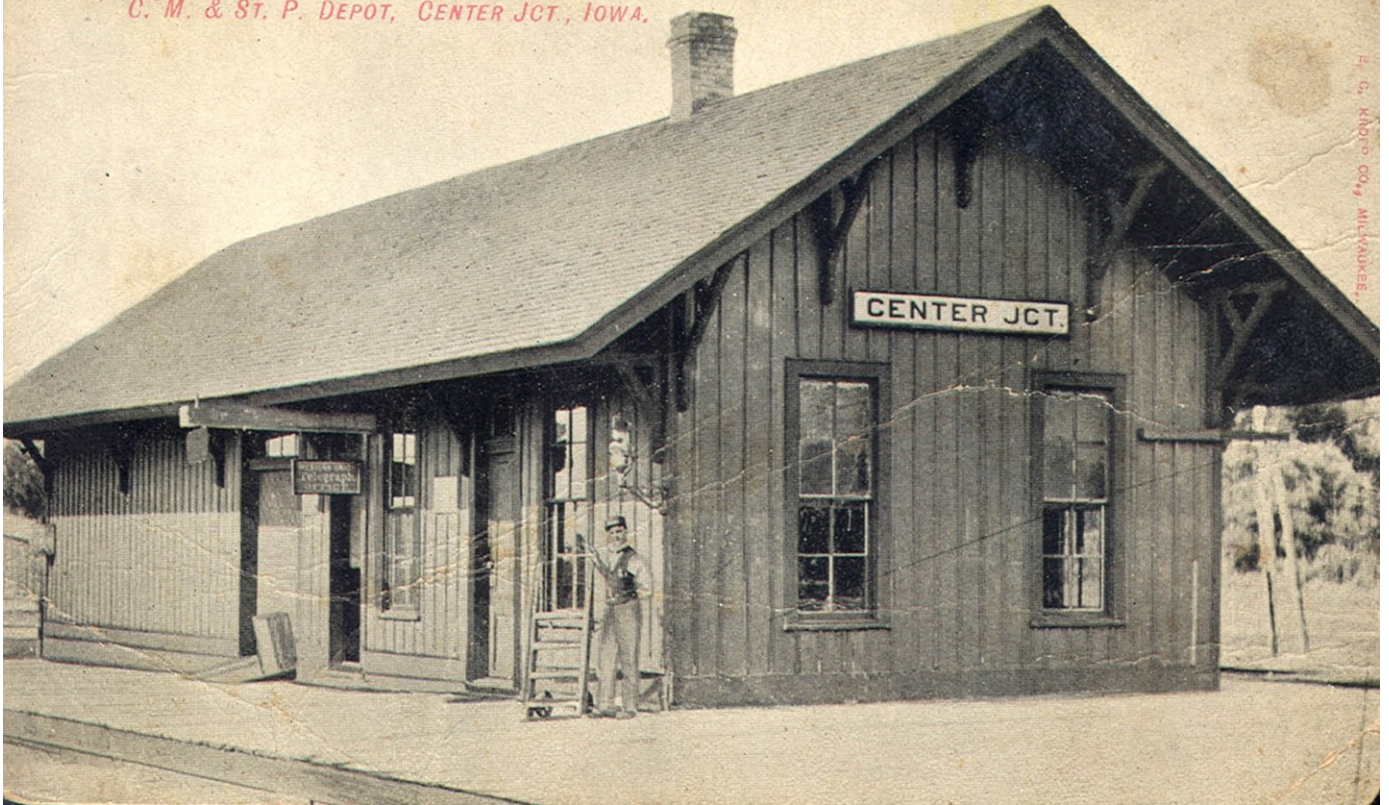
MAGNIFICENT DISPLAY OF FIREWORKS

EVERYBODY COME AND HAVE A GOOD TIME

J. McDONALD, Marshal of the Day. R. G. LYANS, President of the Day

4 July 1907

C. M. & ST. P. DEPOT, CENTER JCT., IOWA.



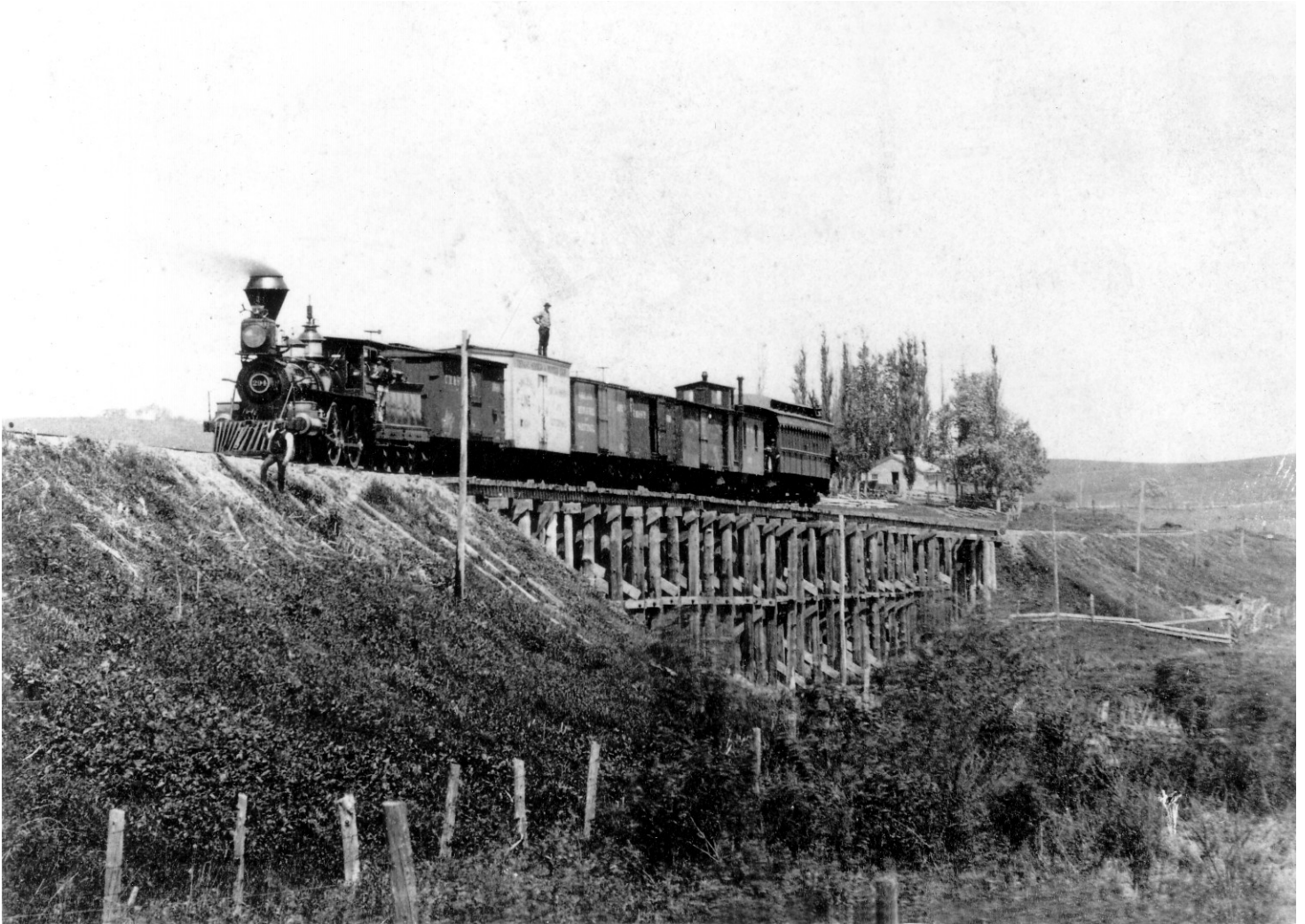
E. G. KNOX CO., MILWAUKEE.



MAIN ST CENTER Jct. IA.



Center Junction Main Street, "Before the Fire" I don't know much about that incident. That and the loss of the railroads probably is what did this town in.



On Google Earth you can still kind of follow the right of way of the east – west *Chicago and Northwestern RR* to the east as it passes through the next town, Onslow, Iowa on a diagonal in a south east direction. (It's pretty faint but discernible if you know you're looking for an old right of way). I can't really see the north – south, *Chicago, Minneapolis and St. Paul RR* route.

I've shared the train photo before but it goes along well with the other photos and the poster that I recently found.

So many of these small, midwestern towns have either vanished or are in the process of disappearing.